

Ethernet Packet Generator

Getting Started Guide

Version 3.2

1. INSTALLATION

This section describes the driver, APG Control Interface and TCL API installation process on a host PC running Linux or Windows.

1.1 BOX CONTENTS

The shipping carton contains:

- APG Unit
- Universal Desktop 12Vdc 5A Power Supply & local mains lead
- 1m USB Type B lead
- Getting Started Guide
- 4x Rubber Feet
- Axtrinet Resource CD for Windows and Linux:
 - USB Drivers
 - APG Control Interface Application
 - APG TCL API
 - Documentation

Visit www.axtrinet.com/documentation for the latest documentation and software.

1.2 MINIMUM SYSTEM REQUIREMENTS

Processor	Pentium-class processor or equivalent
Memory	2GB (4GB recommended)
Disk Space	15MB
OS	64bit (x86_64) Linux systems Microsoft Windows 7 Microsoft Windows 8.x Microsoft Windows 10.x Microsoft Windows 11.x
Interfaces	Minimum: USB 2.0 Preferred: USB 2.0 & 10/100Base-T

1.3 LINUX INSTALLATION

The Axtrinet APG Linux package contains the GUI application and the system configuration file. The GUI requires X- Windows to be running.

There are 4 installation formats provided for convenience:

- Simple tar
- Pacman
- RPM
- Deb

Pick the one that suits the distribution and the package should install with the normal package handling tools or use the commands below.

Currently all packages are for 64bit (x86_64) linux systems. The package files may not have all package dependencies because package names vary between different linux distributions.

See the notes in the Dependencies section below for package dependencies.

Pacman

Install with

```
pacman -U apgcontrol-3.2-1-x86_64.pkg.tar.xz
```

Remove with

```
pacman -R apgcontrol
```

RPM

Install with

```
rpm -U apgcontrol-3.2-1.x86_64.rpm
```

or

```
yum localinstall apgcontrol-3.2-1.x86_64.rpm
```

Remove with

```
rpm -e apgcontrol
```

There are a set of MD5/SHA1/SHA256 sums for the package files.

The package includes a desktop link that should appear under Network tools.

If it doesn't work

Provided the package install worked, once installed there should be an executable 'apgcontrol' in /usr/bin. If it does not run then check for missing libraries with:

```
ldd /usr/bin/apgcontrol
```

Dependencies

The following base packages are required but will normally already be installed:

fontconfig, libxft, libx11

The following optional dependencies are also required for some functionality:

- To connect to USB ports **libusb** (libusb-1.0.so) is required. If it is not present, USB connected units will not appear.
- In addition to run the scripting interface you will require to have a **tcl** package (provide tclsh, libtcl8.6.so) installed and to run the test suite **tk** (provide wish) to run the UI and **texlive** or **texlive-bin** (provide pdflatex) to create the pdf report documents.

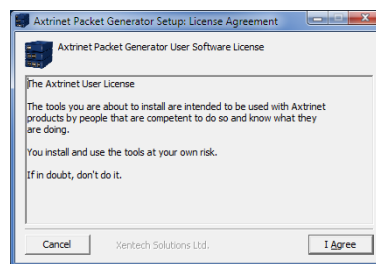
1.4 WINDOWS INSTALLATION

1. Insert the CD.
2. Locate "apg-install.exe" in the Windows directory
3. Run the installation file and follow the on-screen instructions to install the USB driver, APG Control Interface GUI and the APG TCL API.

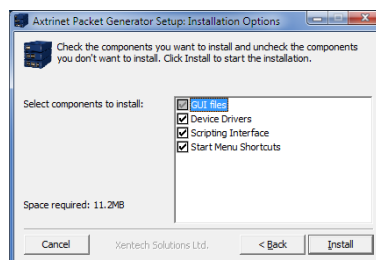


DO NOT CONNECT THE AXTRINET PACKET GENERATOR TO THE WINDOWS PC UNTIL THE INSTALLATION IS COMPLETE.

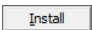
4. Read and accept the software Licence Agreement:



5. Select the components to install:



The installer will only update the installed components if a newer component is available.

Click  to start installing the selected components.

